



Technical data sheet for large insulating Dewar flasks Type 30/4 - 35

Area of application

- laboratory technique
- medicinal technique
- Biotechnology
- Storing of CO₂ or for liquid nitrogen or solid media and solid matters
- Pressure-less space for coolants

Features of performance

- Reliably and economically
- Dewar flasks according to DIN 12492
- glass material according to ISO 3585
- nominal capacity from 4 to 40 litres
- protective casing out of blue-coated metal "Type C"
- protective casing out of Aluminium casing "Type CAL"



Dewar flasks 30/4 to 32 C with handle



Dewar flasks 33 to 35 CAL with side grips

Description of complete flasks

Types and accessories

- C = blue-coated protective casing out of metal
- CAL = stucco Aluminium casing
- handle = Type 30/4 to 32
- side grips = Type 33 to 35
- lid made of Aluminium white coated or Polyethylen, with PU - insulating disc
- loose lid lid

Temperature ranges

- glass refill from -200°C to +150°C
- Aluminium lid up to +80°C
- Polyethylen lid up to +80°C
- casing with mounting rubber from -10°C to +60°C

Pressure range

- pressure - less

Description of glass Dewar flask

Material

- borosilicate glass 3.3 ISO 3585

Chemical characteristics

- hydrolytic resistance: according to ISO 719 (98°C)
- hydrolytic resistance: according to ISO 720 (121°C)
- acid resistance: according to ISO 1776
- alkaline resistance: according to ISO 695-A2

Physical characteristics

- linear expansion coefficient: $3,3 \times 10^{-6}$ 1/K (in between 20-300°C)
- density: 2,23 g/cm³
- specific thermal capacity: 910 J/kg K
- transformation temperature: 525°C

Vacuum

- $> 5 \times 10^{-6}$ mbar

Silvering

- fully silvered

KGW - ISOTHERM

Karlsruher Glastechnisches Werk
76185 Karlsruhe Gablonzerstraße 6
Tel: 0721 95897-0 Fax: 0721 95897-77
E-Mail: info@KGW-ISOTHERM.COM
Internet: www.KGW-ISOTHERM.COM



Technical data sheet for large insulating Dewar flasks Type 30/4 - 35

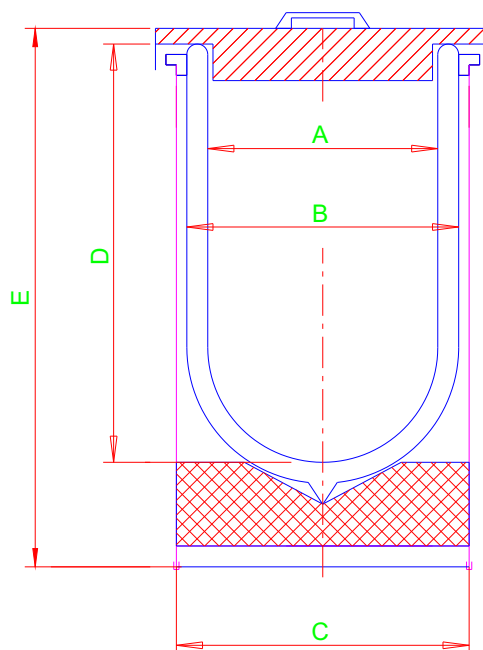
Special types

- large insulating flasks with stainless steel casing
- large insulating flasks with special lid
- large insulating flasks with spring clips and lid
- large insulating flasks with roller base

Safety advises and regulations

- always wear protective glasses and protective gloves
- watch national regulations for laboratories
- watch company- internal regulations
- safety regulations for handling with liquid gases
- ADR regulations

Measurements and order data



Technische Angaben / Technical Specifications / Caractéristiques techniques								
Typ	max. Inhalt	A	B	C	D	E	Gewicht	Verdampfungsrate CO ₂
Type	max. Content						Weight	Evaporation rate CO ₂
Types	Capacité max.						poids	Taux d' évaporation CO ₂
	ca. [L]	mm	mm	mm	mm	mm	ca. [kg]	ca. [kg / d]
30/4 C (30/4 CAL)	4	158	183	210	250	340	5	0,45
30/7 C (30/7 CAL)	7	158	183	210	400	490	6	0,4
30 C (30 CAL)	7	200	230	250	275	385	6	0,45
31 C (31 CAL)	10	200	230	250	350	475	8	0,4
32 C (32 CAL)	14	200	230	250	500	610	9	0,4
33 C (33 CAL)	21	250	280	300	480	615	14	0,6
34 C (34 CAL)	28	250	280	300	620	750	16	0,6
35 C (35 CAL)	40	280	330	355	650	780	23	0,9
Artikel-Nummern / Article numbers / Référence								
Typ	Artikel Nr.	Typ	Artikel Nr.	Ersatzglas		Artikel Nr.		
Type	Article No.	Type	Article No.	Glass Refill		Article No.		
Types	Référence	Types	Référence	Récipient replacement		Référence		
30 / 4 C	1248	30/4 CAL	1258	40		1231		
30 / 7 C	1249	30/7 CAL	1259	41		1232		
30 C	1241	30 CAL	1251	42		1233		
31 C	1242	31 CAL	1252	43		1234		
32 C	1243	32 CAL	1253	44		1235		
33 C	1244	33 CAL	1254	45		1236		
34 C	1245	34 CAL	1255	46		1237		
35 C	1246	35 CAL	1256	47		1238		

KGW - ISOTHERM

Karlsruher Glastechnisches Werk
 76185 Karlsruhe Gablonzerstraße 6
 Tel: 0721 95897-0 Fax: 0721 95897-77
 E-Mail: info@KGW-ISOTHERM.COM
 Internet: www.KGW-ISOTHERM.COM